

ADCOCK

R E A L E S T A T E



26 Wattle Street Lobethal SA

3 1

Home sweet home for the hands-on!

Be done with the city buzz for Lobethal's rural relief in a sweet 1950s weatherboard 3-bedroom home that'll captivate from its hillside perch to its 797sqm* of DIY-ready great outdoors?

And whether you enter via the traditional front door or the open plan family room's sliding glass doors, you're greeted by freshly repainted interiors, hardwearing laminate floors, and a brilliant opportunity for first-time nesters, investors, or downsizers.

Off entry, the kitchen/meals zone with its electric oven, cooktop, dishwasher, pendant lights, and durable

Type : House
Price : \$447,000
Land Size : 797 sqm
View : <https://www.adcock.com.au/7204371>

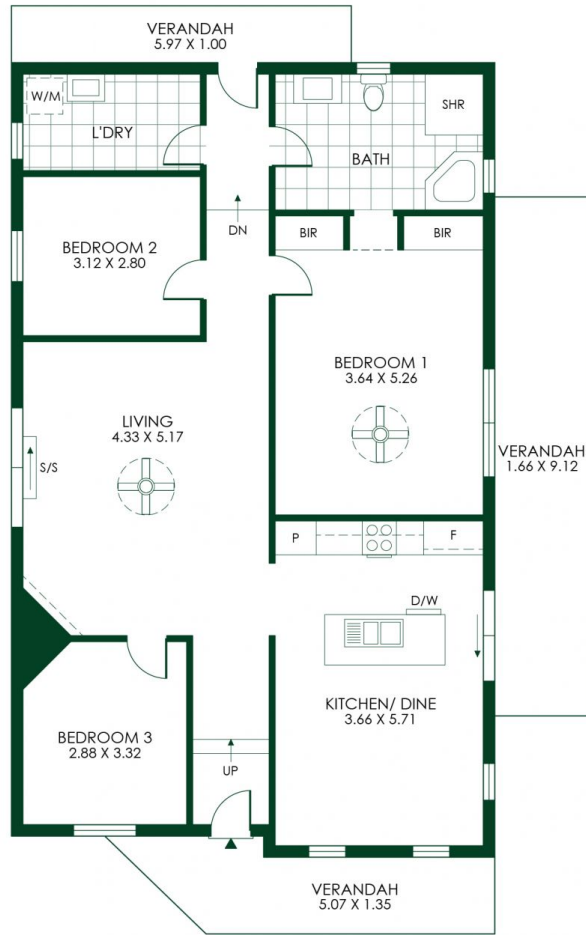


Andrew Adcock
08 8388 4777



Nikki Seppelt
08 8388 4777

[For full version visit the website](#)



147m²

TOTAL

117m²

Living

30m²

Verandah



WATTLE STREET

18.35m
23.54m
3.74m 6.00m 6.00m
44.89m
18.82m

26
797sqm
(approx.)

