



6 Tweed Court Lobethal SA

3 2 2

There are so many high points to this one. Its gentle elevation, main street proximity, and the naturally fab Lobethal views this owner-built 1980s pedigree presents for the eager doer-upper or first-time buyer.

Dated yet perfectly preserved, this 3-bedroom, 2-bathroom surprise has a bang-on floorplan hungry for a fresh family feel by those who'll honour its worth and hills serenity.

From the parquet-floored foyer, the formal lounge brings double the views via dual oversized panes, pivots to a separate dining room, and steers into the rear kitchen timber-grain sensation.

Its retro vibe offers an electric cooker, dishwasher, masses

Type : House
Price : \$535,000
Land Size : 920 sqm
View : <https://www.adcock.com.au/7286361>

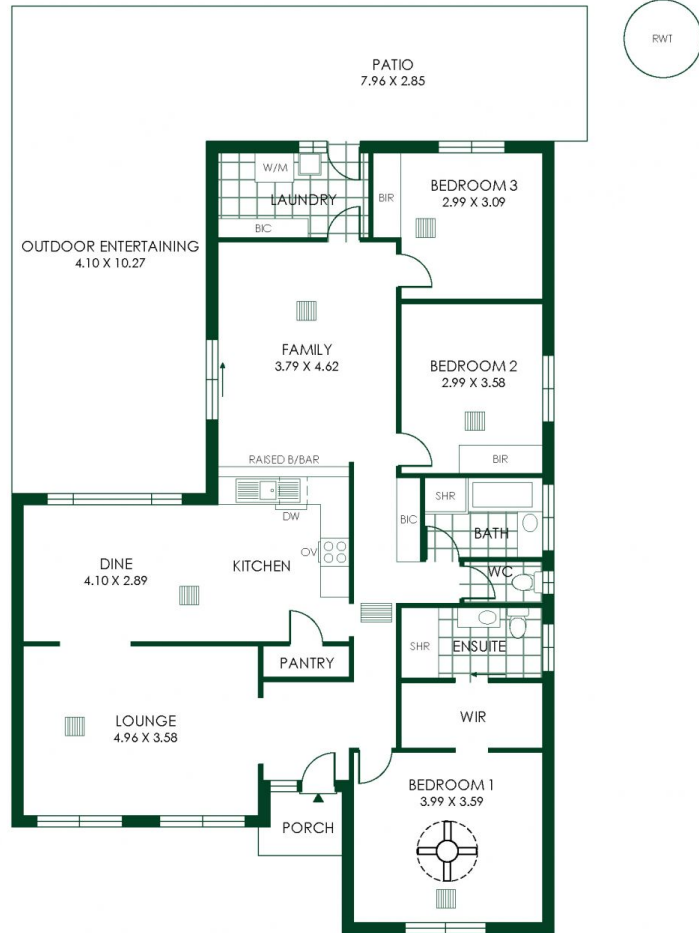
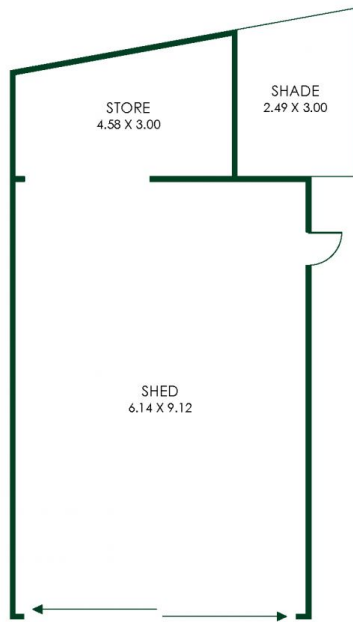


Nikki Seppelt
0437 658 067



Andrew Adcock
0418 816 874

[For full version visit the website](#)



RW1

283m²
TOTAL

144m²
Living

2m²
Porch

72m²
Store/
Shed

65m²
Patio/ Outdoor
Entertaining



