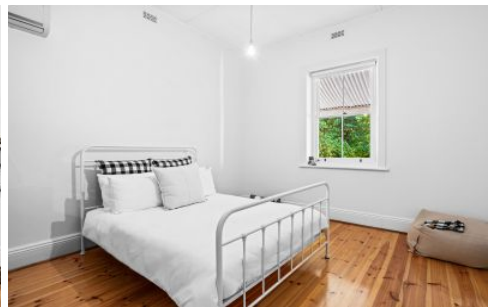


ADCOCK

R E A L E S T A T E



75 Onkaparinga Valley Road Balhannah SA

4 1 2

Grace & charm on a hard-to-beat corner block!

"Gilleston" began as a quaint 2-roomed cottage. Today, its extended and whitewashed 4-bedroom charm with town-heart convenience creeps deep into its 1320sqm corner stance with decked elevation and garden grace?

Led by 4 generous front rooms - 2 with 3.2m ceilings - the master bedroom adding chandelier luxe and ornate fireplace ambience to its warm timber floors; bedroom 4 ready to flip as a 2nd living or formal dining room with an open fire against its sunroom/study annex.

And what's a rewrite without a crisp white bathroom, floating vanity, and era-nodding clawfoot bath? Yet where

Type : House
Price : \$810,000
Land Size : 1320 sqm
View : <https://www.adcock.com.au/7382565>

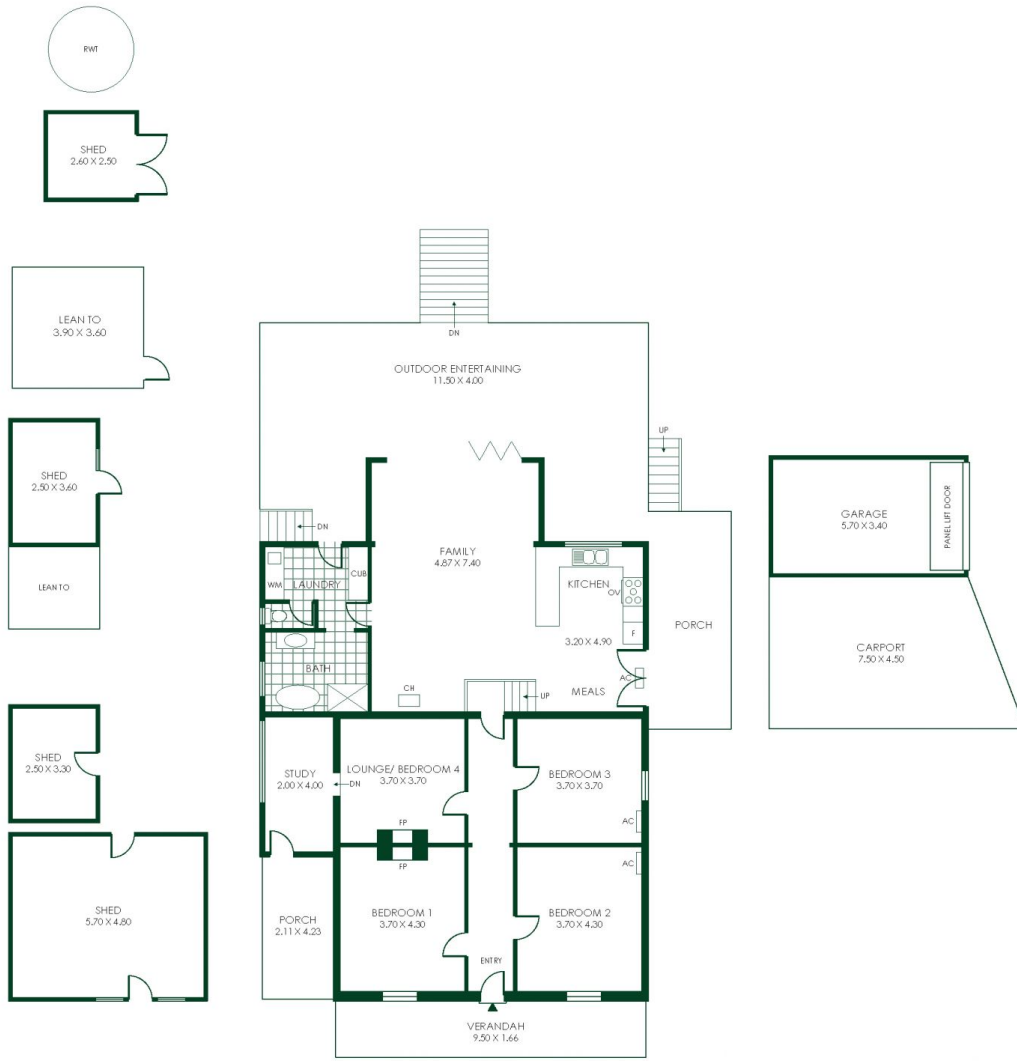


Jake Adcock
0432 988 464



Andrew Adcock
0418 816 874

[For full version visit the website](#)



- 376m²

TOTAL
- 160m²

Living
- 72m²

Shed
- 52m²

Garage/
Carport
- 41m²

Porch/
Verandah
- 51m²

Outdoor
Entertaining



