

ADCOCK

R E A L E S T A T E



8 Berwick Crescent Strathalbyn SA

5 🚗 2 🚚 3 🚗

It's all in the details - the energy, the aesthetics and a clever c2020 architectural design of tone and texture in a custom Lumea Building Co. prodigy to leave you spellbound?

Set on a newly established cul-de-sac in the unofficial antique capital of South Australia, this home turns heads from the outset and widens eyes from within, and John Adam Architects - the masters of maximising minimalism - triumph again embracing solar, double glazing, and louvred ventilation enhancing a 5-bedroom deconstructed footprint where form, function, and finesse march as one.

The home leads with Blackbutt timber floors and an escape to parental seclusion - a wing granting walk-in robe and

Type : House
Price : \$831,500
Land Size : 756 sqm
View : <https://www.adcock.com.au/7494703>

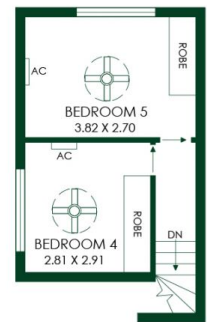
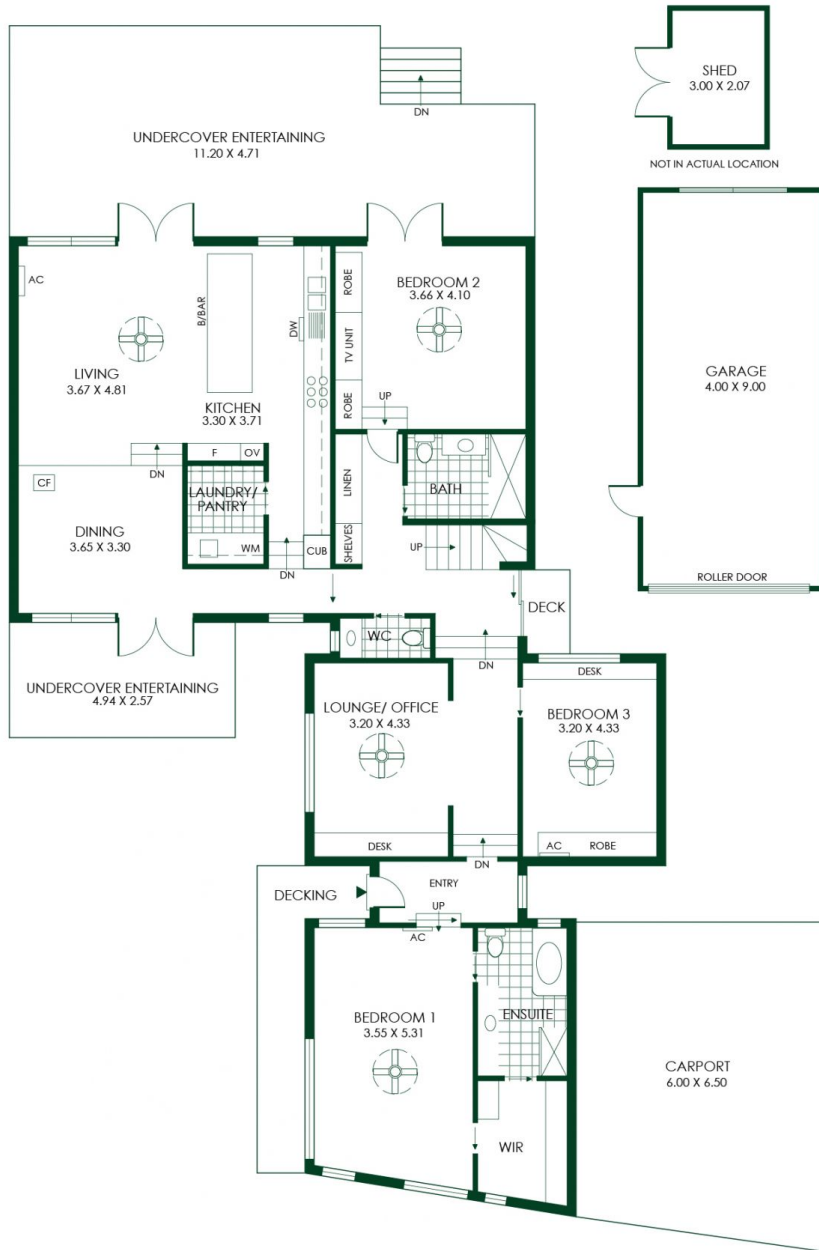


Jake Adcock
0432 988 464



Andrew Adcock
0418 816 874

[For full version visit the website](#)



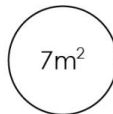
361m²

TOTAL



205m²

Living



7m²

Shed



75m²

Garage/
Carport



12m²

Deck/
Decking



62m²

Undercover
Entertaining



