

# ADCOCK

R E A L E S T A T E



## 22 Freshford Place Woodside SA

3  1  3 

When simplicity is key and tree lined views are the goal, then it must be a rendered 3-bedder with all the park-like stretch in the world, rear gate Amy Gillett bike track reach, and a leafy wander to the main street?

Sublime gardens deem your outdoor lifestyle complete with a built-in BBQ, plumbed hot water, a firepit zone, wood store, and pizza oven crackling away as you pass the nibbles plate beneath the vast rear verandah.

Throw in parking and home business brilliance thanks to multiple shedding, gravelled parking for utes, trailers, or people movers, plus a lined and air-conditioned shed/office, and your young family hills treat is mission accomplished.

**Type** : House  
**Price** : \$625,000  
**Land Size** : 1147 sqm  
**View** : <https://www.adcock.com.au/7527792>

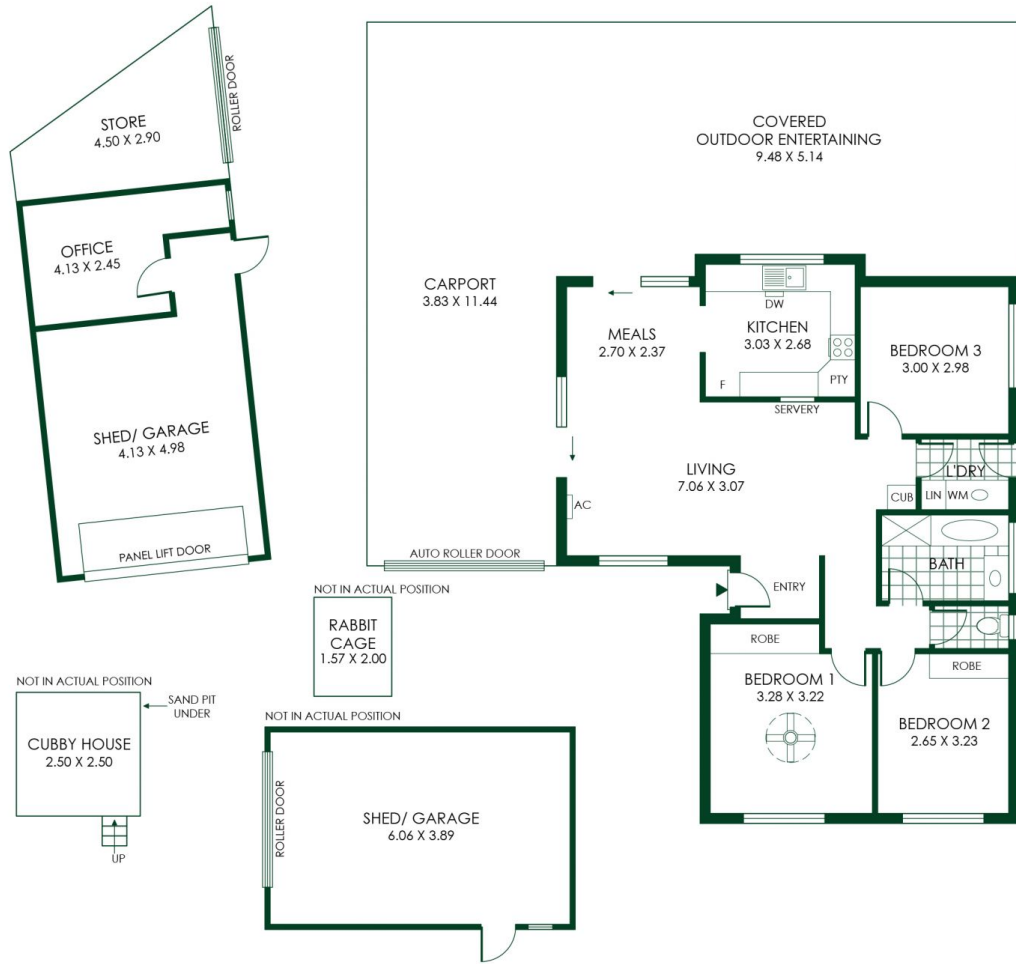


**Jake Adcock**  
0432 988 464



**Andrew Adcock**  
0418 816 874

[For full version visit the website](#)



238m<sup>2</sup>

TOTAL

89m<sup>2</sup>

Living

59m<sup>2</sup>

Shed/  
Garage/ Office

44m<sup>2</sup>

Carport

46m<sup>2</sup>

Covered  
Outdoor Ent.



