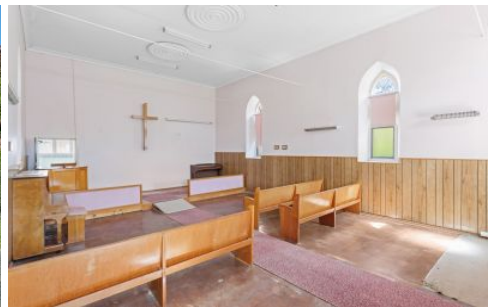


ADCOCK

R E A L E S T A T E



58 Princes Highway Littlehampton SA

1 1 1

It's heavenly, historic, and probably not what you were expecting - yet it's got plenty of scope and scale for a divine reinvention.

It began as The Methodist Church in 1862. Beyond the porch and double entry doors, the simple footprint proceeds from the leading main hall and chancel to a spacious tearoom/rear hall with a small kitchenette.

And one look at its weathered bell, stone charm, and north-facing Torrens titled 1790sqm allotment will give the creative builder or investor all the inspo they need.

The timber pews*, wall panelling, 4.65m main hall ceilings and soaring Gothic panes await a fate at the mercy of your imagination, or as far as Council allows this Local Heritage Place to go?

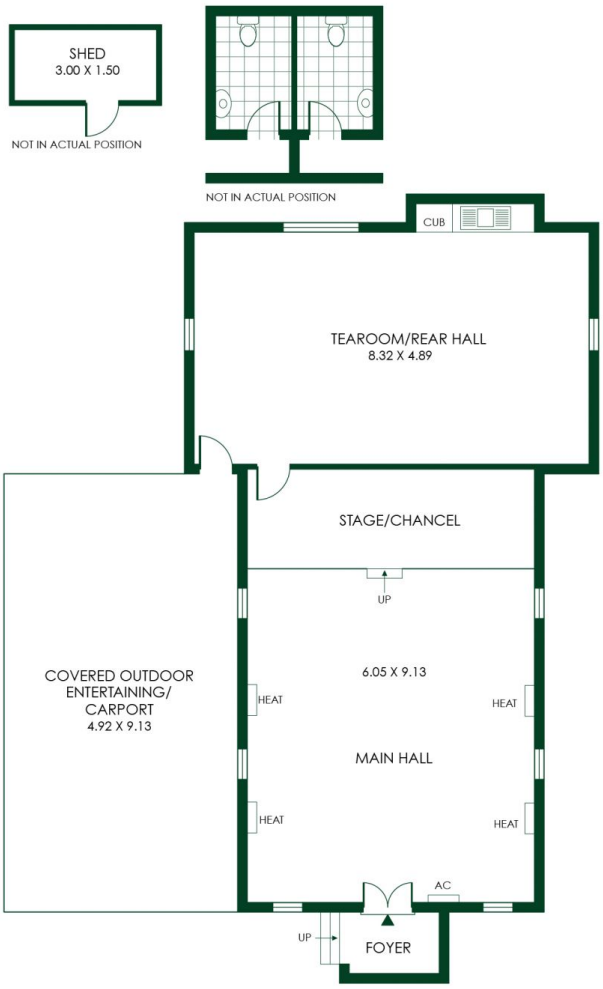
Price : \$ 670,000
Land Size : 1790 sqm
View : <https://www.adcock.com.au/7527793>



Nikki Seppelt
08 8388 4777

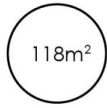


Andrew Adcock
08 8388 4777



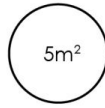
126m²

TOTAL



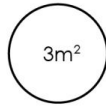
118m²

Living



5m²

Shed



3m²

Porch



