




ADCOCK

R E A L E S T A T E



17 Rule Court Littlehampton SA

4  2  2 

Now for a foliage love affair - a landscaped 1770sqm allotment dispersing a sea of colour around an Oakford Homes 4-bedroom design with a creek and reserve skimming its rear cul-de-sac boundary.

Price : \$ 945,000

Land Size : 1770 sqm

View : <https://www.adcock.com.au/7889976>

Skip store-bought flowers for vase art you can create from these gratifying gardens, and the sweeping natural tapestry, divine from any angle yet panoramic from the elevated all-weather rear deck, adds an extra layer of visual contentment.

Step inside, and the value is all too clear.

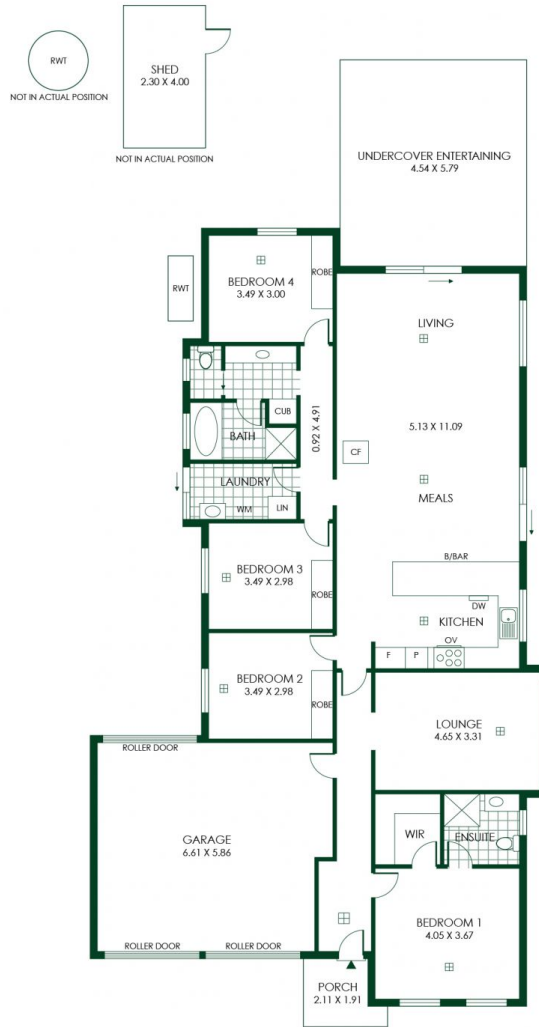
Pared-back neutrals give any furniture theme the green light against the 2010-built home's calming botanical backdrop, which means buyer appeal will be as vast as the fully fenced backyard.



Nikki Seppelt
08 8388 4777



Andrew Adcock
08 8388 4777



- 250m²
TOTAL
- 171m²
Living
- 9m²
Shed
- 40m²
Garage
- 4m²
Porch
- 26m²
Undercover Entertaining

