

# ADCOCK

R E A L E S T A T E



### 3 School Road Lobethal SA

3 1 3

All it takes are solid 1960s bones and a sympathetic revamp for your first-home standards to soar to family-nurturing, life-changing Lobethal chic?

The answer is here; reborn, re-landscaped, and ready to play on a 930sqm lifestyle parcel.

And right from the living room word go, this family nest embraces sunlight and outlooks thanks to high ceilings and big windows, yet it's the barely-there honeycomb blinds, timeless floorboards, and sliding barn doors that give this pretty 3-bedder an in vogue new ego.

Electric appliances and cornering, garden-viewing panes give the kitchen its best groove yet, and conducive to crowd flow, alfresco fun is a sidestep from the dishwasher - all part of the unexpected rewards you'll reap along with

**Price** : \$ 694,999  
**Land Size** : 930 sqm  
**View** : <https://www.adcock.com.au/7914767>



**Nikki Seppelt**  
08 8388 4777

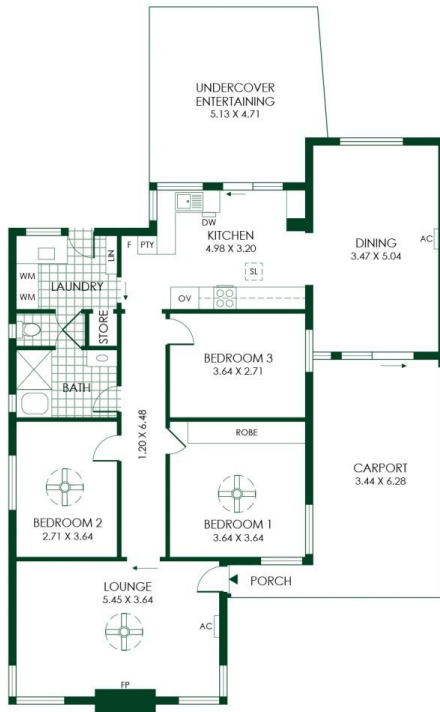


**Andrew Adcock**  
08 8388 4777

NOT IN ACTUAL POSITION



NOT IN ACTUAL POSITION



- 228m<sup>2</sup>

TOTAL
- 123m<sup>2</sup>

Living
- 25m<sup>2</sup>

Porch/  
Carport
- 59m<sup>2</sup>

Garage/  
Workshop
- 21m<sup>2</sup>

Undercover  
Entertaining

