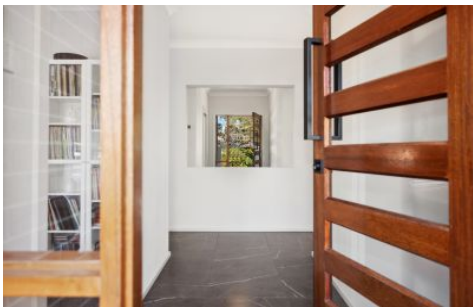


# ADCOCK

R E A L E S T A T E



## 45a Mill Road Lobethal SA

4 2 1

Don't let the post and rail fencing fool you. This modern homestead puts the chic into country living, allowing on-trend neutrals, styling, and an urban edge to take full flight in its family-oriented Fairmont Homes design.

Cornering Mill Road and Riley Street, it's a life-changing outlook indeed.

For the levelled and landscaped 598sqm allotment, the expansive 4-bedroom adaptability, joyous natural light throughout, and the years of family fun ready to roll here, all but a side-skip from Lobethal Primary School.

You'll awe over the light-filtering, cinematic S-wave sheers that define every bedroom and living zone, the 2.7m ceilings, designer pendants, bedside lighting and fixtures, the house-warming combustion fire, and respectable 7kW

**Price** : \$750,000 - \$820,000  
**Building Size** : 167 sqm  
**Land Size** : 598 sqm  
**View** : <https://www.adcock.com.au/8002323>



**Jake Adcock**  
08 8388 4777



**Andrew Adcock**  
08 8388 4777



224m<sup>2</sup>

TOTAL

167m<sup>2</sup>

Living

24m<sup>2</sup>

Garage

23m<sup>2</sup>

Pergola

10m<sup>2</sup>

Shed

