

ADCOCK

R E A L E S T A T E



8 Clayfield Court Woodside SA

4  2  2 

Hover amongst the hills like you own them; a privilege you'll savour from the spectacular lens of a Rossdale Home holding garden and valley captive from the most stunning, cul-de-sac stage.

For the discerning hills-dweller, this sophisticated, solar-boosted 4-bedroom design uses its landscaped, gently graduating quarter acre to the utmost effect.

From the detached double garage with full undercroft storage and extra guest parking to the shrubbed and hedged gardens framing a paved patio terrace, a few adventurous steps away from an ambient firepit finale.

Your first step inside the split-level home steers left for a

[For full version visit the website](#)

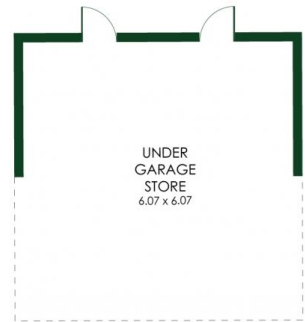
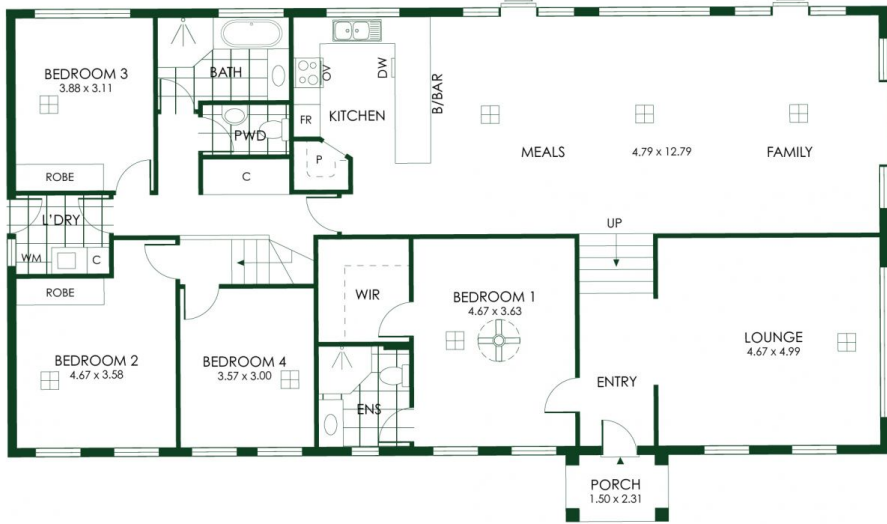
Type : House
Price : \$940,000
Land Size : 1067 sqm
View : <https://www.adcock.com.au/8033740>



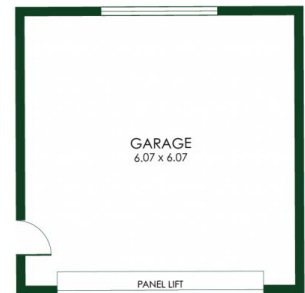
Nikki Seppelt
0437 658 067



Andrew Adcock
0418 816 874



(NOT IN ACTUAL LOCATION)



(NOT IN ACTUAL LOCATION)

- 265m²

TOTAL
- 188m²

Living
- 37m²

Garage
- 3m²

Porch
- 37m²

Store

