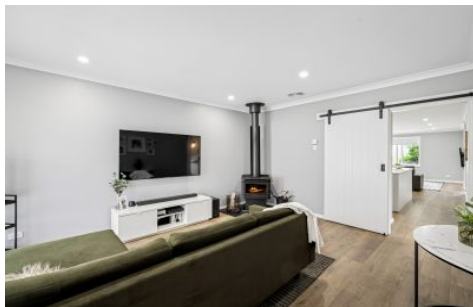





# ADCOCK

R E A L E S T A T E



83B Grevillea Way Woodside SA

3  2  1 

Immaculate from the get-go, the real surprise is on the inside - reimagined interiors, a quietly modern evolution, and a three-bedroom home primed to kick-start family life superbly, on an enriching 505sqm allotment.

The millennium-built home's fresh contemporary hues sing beside new fixtures, window furnishings, hybrid floating floors, an all-new kitchen and bathroom - adding immeasurable value for the investor, downsizer or young family.

From entry, the master bedroom whisks you into soft serenity thanks to floaty sheers, a soothing wall scene, and drop pendant lighting. The mood rounding off with walk-in robes, a crisp ensuite, and automatic roller shutters for

**Type** : House  
**Price** : \$832,000  
**Land Size** : 505 sqm  
**View** : <https://www.adcock.com.au/8602380>

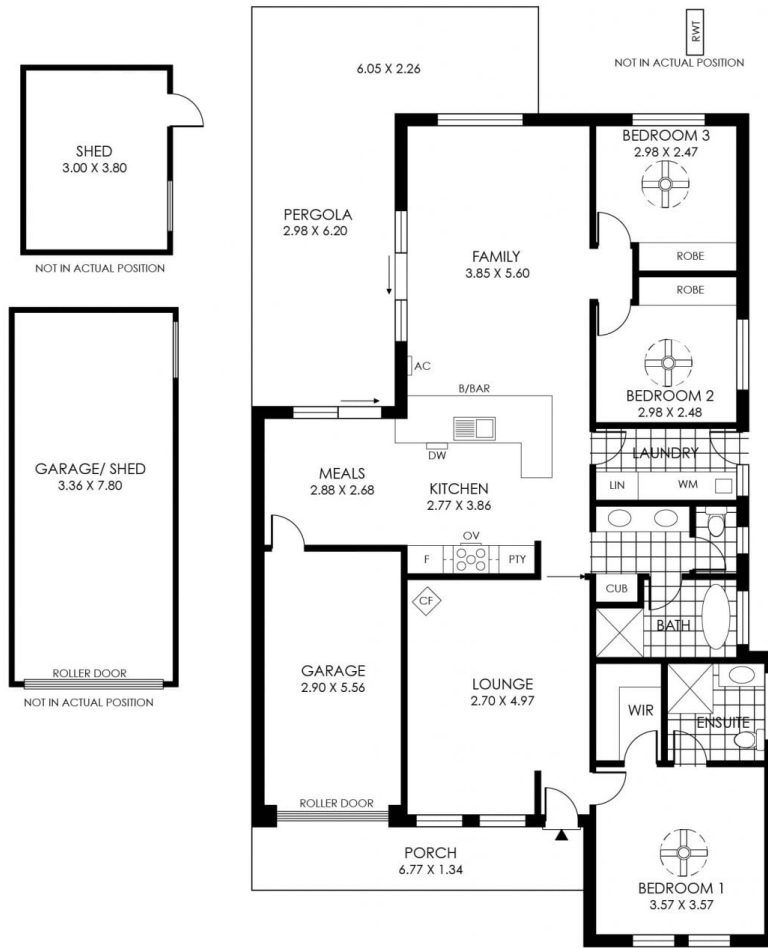


**Nikki Seppelt**  
0437 658 067



**Andrew Adcock**  
0418 816 874

[For full version visit the website](#)



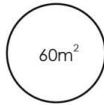
234m<sup>2</sup>

TOTAL



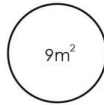
133m<sup>2</sup>

Living



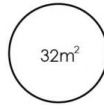
60m<sup>2</sup>

Shed/  
Garage



9m<sup>2</sup>

Porch



32m<sup>2</sup>

Undercover  
Entertaining



