

ADCOCK

R E A L E S T A T E



2 Allendale Grove Woodside SA

3 1

Immaculate, established gardens do more than set the scene for this three-bedroom colonial; they deliver a lush, low-care slice of Woodside with impressive entertaining benefits.

The home's veil of crisp white defies its 1990s style. Yet what defines it, are its large sunlit bay windows that frame the front-facing formal lounge and two of its three generous bedrooms.

If you thought dual living zones were the bonus, the home also features new carpets, 5kW of solar, off-street parking, plus a garage conversion with multiple roles up its sleeve.

For families or downsizers drawn to alfresco entertaining,

[For full version visit the website](#)

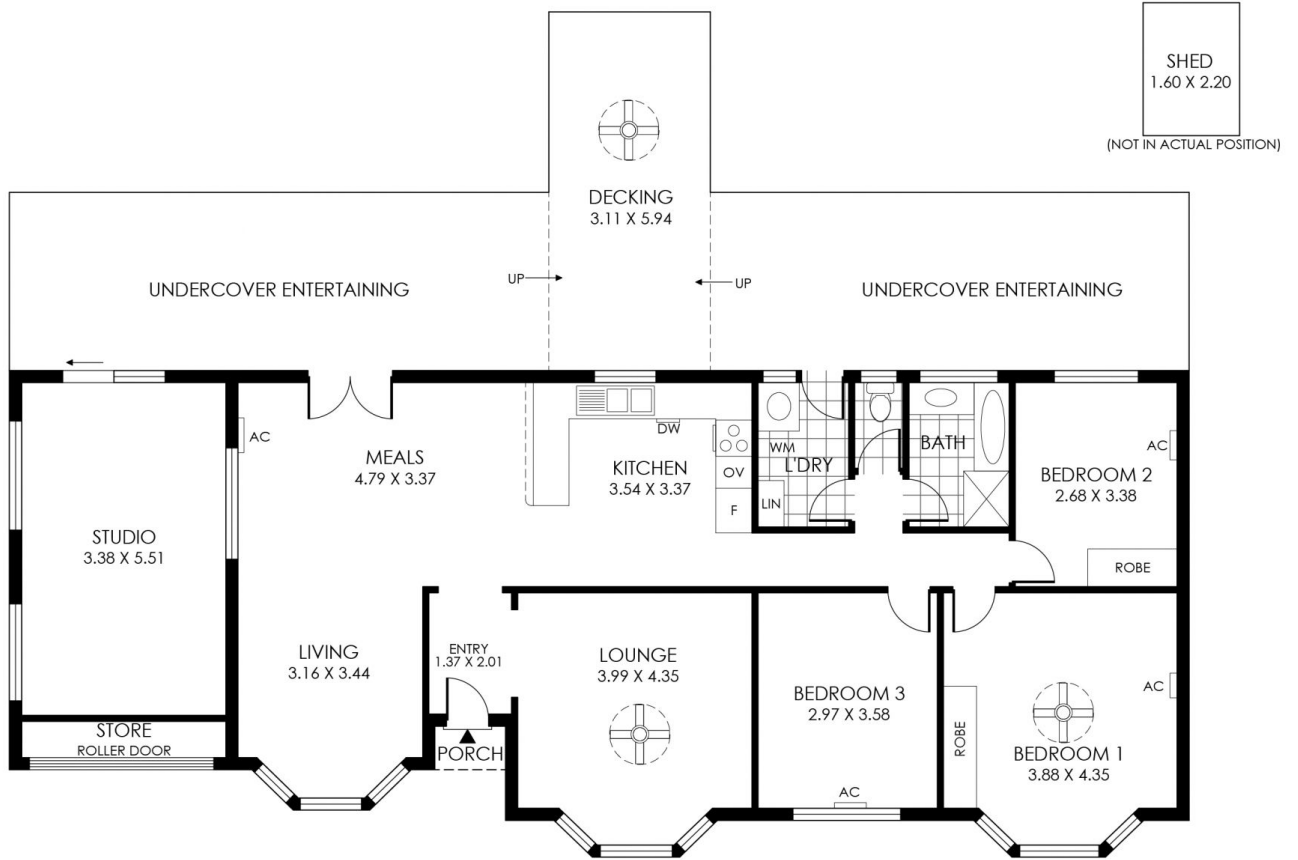
Type : House
Price : \$837,500
Land Size : 967 sqm
View : <https://www.adcock.com.au/8681317>



Nikki Seppelt
0437 658 067



Andrew Adcock
0418 816 874



208m²

TOTAL



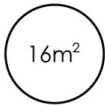
138m²

Living



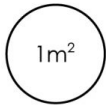
4m²

Shed



16m²

Decking



1m²

Porch



49m²

Undercover
Entertaining





2

967sqm
(Approx.)

ALLENDALE GROVE

